

A large red horizontal scroll graphic with rounded corners and a vertical strip on the left side, resembling a rolled-up document. The word "Pathways" is written in white serif font across the center of the scroll. A small red rectangular block is visible in the top right corner of the page.

Pathways

FOOTSTEPS TO BETTER PEDIATRIC CARE



2 FINGERS IN-BETWEEN
THE NIPPLE LINE

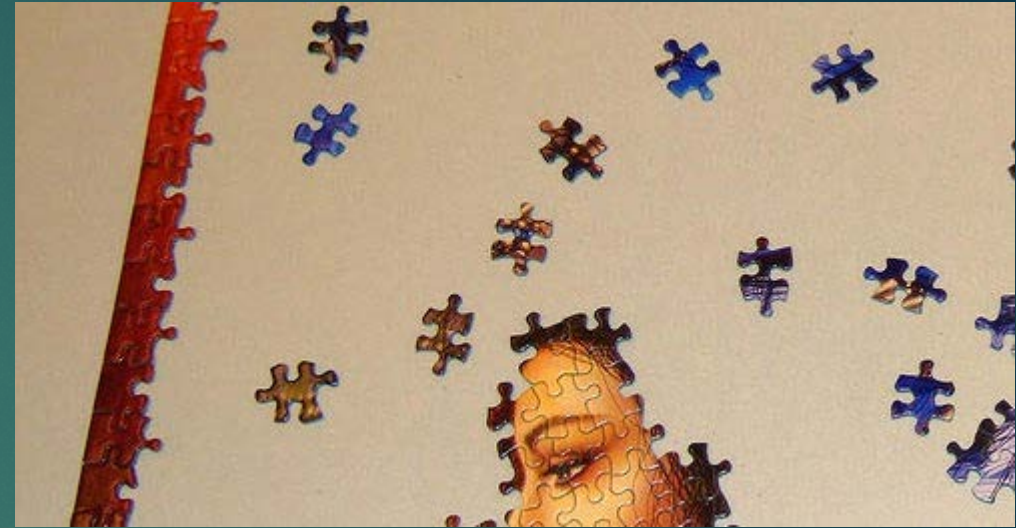
1 BREATH EVERY
3 SECONDS

Pathway begins...

INFANT AND CHILD CPR ARE THE INTRODUCTION

Pathway grows.....

- ▶ EMT Class teaches us
 - ▶ They aren't just small adults
 - ▶ The head is larger than the body
 - ▶ The tongue is big and the airway is tiny
- ▶ What EMT class doesn't teach you about pediatrics
 - ▶ How to manage this person that is not a small adult
 - ▶ How to handle screaming parents/grandparents
 - ▶ How to look an abuser in the eye when they lied to you and a child has a permanent brain injury



Pathway continues

- ▶ Why do we seem to not think about the patient that scares us the most?
- ▶ Why do we not train on the patient that scares us the most?
- ▶ Why do we relive events after runs on patients that scare us the most?
- ▶ Why....because if we ignore the problem, it goes away! Right??



WRONG

Pathway Continues

YOU DON'T KNOW WHAT YOU DON'T KNOW!

IS THAT AN EXCUSE OR A REASON TO LEARN?



- ▶ It's all rainbows and unicorns...until it's not!
- ▶ Dead kids come in all shapes and sizes
 - ▶ From neonate to 18
- ▶ When is the best time to train on a pediatric patient?
 - ▶ IN A SIMULATION – NOT ON A SCENE!

Pathway Continues



Pathway Continues

- ▶ Research completed
 - ▶ Neo-Tee
 - ▶ Neonatal equipment
 - ▶ Size 0 and 00 Laryngoscope blades
 - ▶ Size 2.0 and 1.5 ET tubes
 - ▶ Neonatal Electrodes
 - ▶ Neonatal Training Baby
 - ▶ And we trained
 - ▶ And trained
 - ▶ And trained some more



Pathway Continues

- ▶ EMS Conferences
 - ▶ Why should you go?
 - ▶ As a director
 - ▶ As a training officer
 - ▶ As a field provider



2018 Kentucky EMS Conference and Expo
Twenty Eighth Annual **September 18 - 21**
Lexington Convention Center

REGISTRATION IS OPEN.

Please go to the KAPA Conference web site to register for the conference.

Pathway Continues

▶ Taking it home?



Handtevy Pediatric Emergency Standards
Pediatric Medication & Equipment Guide
 Denver Paramedics
 DENVER PARAMEDIC DIVISION
 DENVER HEALTH

6MO
 USE ACTUAL AGE (IF STANDARD SIZED CHILD)
 ESTIMATE AGE USING HANDTEVY LENGTH
 (BASED TAPE (HEAD TO HEEL))

Medication	CONC	VOL	RT	DOSE/KG	AMOUNT
amoxicillin (1st)	12 mg/4 mL	0.27 mL	IV/IO	0.1 mg/kg	0.8 mg
amoxicillin (2nd)	12 mg/4 mL	0.53 mL	IV/IO	0.2 mg/kg	1.6 mg
amoxicillin	2.5 mg/5 mL	4 mL	NEB	5 mg	5 mg
amoxicillin	150 mg/5 mL	0.5 mL	IV/IO	5 mg/kg	40 mg
amoxicillin	1 mg/10 mL	1.5 mL	IV/IO	0.02 mg/kg	0.15 mg
amoxicillin	0.5 mg/2.5 mL	N/A	NEB	Not indicated	
amoxicillin	50 mg/50 mL	N/A	IV/IO	Not indicated	
acetaminophen	1 g/10 mL	4.8 mL	IV/IO	60 mg/kg	480 mg
acetaminophen	10 mg/2 mL	0.32 mL	IV/IO	0.2 mg/kg	1.6 mg
acetaminophen	30 mg/15 mL	0.16 mL	IV/IO	1 mg/kg	8 mg
acetaminophen	1 mg/mL	0.08 mL	NEB	0.01 mg/kg	0.08 mg
acetaminophen	1 mg/10 mL	0.8 mL	IV/IO	0.04 mg/kg	0.08 mg
acetaminophen	100 mg/2 mL	0.16 mL	IV/IO	0.01 mg/kg	0.08 mg
acetaminophen	100 mg/mL	0.26 mL	NI	1 mg/kg	8 mg
acetaminophen	1 mg/mL	0.8 mL	NEB	0.1 mg/kg	0.8 mg
acetaminophen	100 mg/2 mL	0.26 mL	NI	1 mg/kg	8 mg
acetaminophen	5 mg/mL	0.32 mL	IV/IO	0.2 mg/kg	1.6 mg
acetaminophen	5 mg/mL	0.56 mL	IV/IO	0.4 mg/kg	3.2 mg
acetaminophen	4 mg/mL	0.2 mL	IV/IO	0.2 mg/kg	1.6 mg
acetaminophen	2 mg/2 mL	0.5 mL	IV/IO	0.2 mg/kg	1.6 mg
acetaminophen	0.5%	160 mL	NI	0.5 mg/kg	4 mg
acetaminophen	4 mg/2 mL	1 mL	IV/IO	0.4 mg/kg	3.2 mg
acetaminophen	4 mg/10 mL	1/2 tab	NI	1 mg/kg	8 mg
acetaminophen	Add 2 mL NS	0.5 mL	IV/IO	0.2 mg/kg	1.6 mg

POUNDS/KG
 2 → 4 → 6 → 8
 0.5 → 1 → 2 → 3

DISTANCE AT LIP
 10.5 - 11 cm

SBP 70 - 100

START AT THE CHILD'S HEAD
 NEWBORN 4 MO 6 MO 1 YR 2 YR 3 YR 4 YR 5 YR 6 YR 7 YR 8 YR 9 YR 10 YR 11 YR 12 YR 13 YR

Pathways

▶ UPGRADED



<https://youtu.be/fK7KymWE9ml>.

Pathway Continues

- ▶ The pathway to a mastery level in pediatric care is not something that happens
 - ▶ Overnight
 - ▶ Over 6 months
 - ▶ Over a year
- ▶ It will take EMS providers years to be comfortable taking care of kids.
- ▶ You have to care about the pathway more than anything else!
- ▶ You have to train without ceasing!!

Pathway Continues



Thank You!
rbutcher@burlingtonkyfire.org