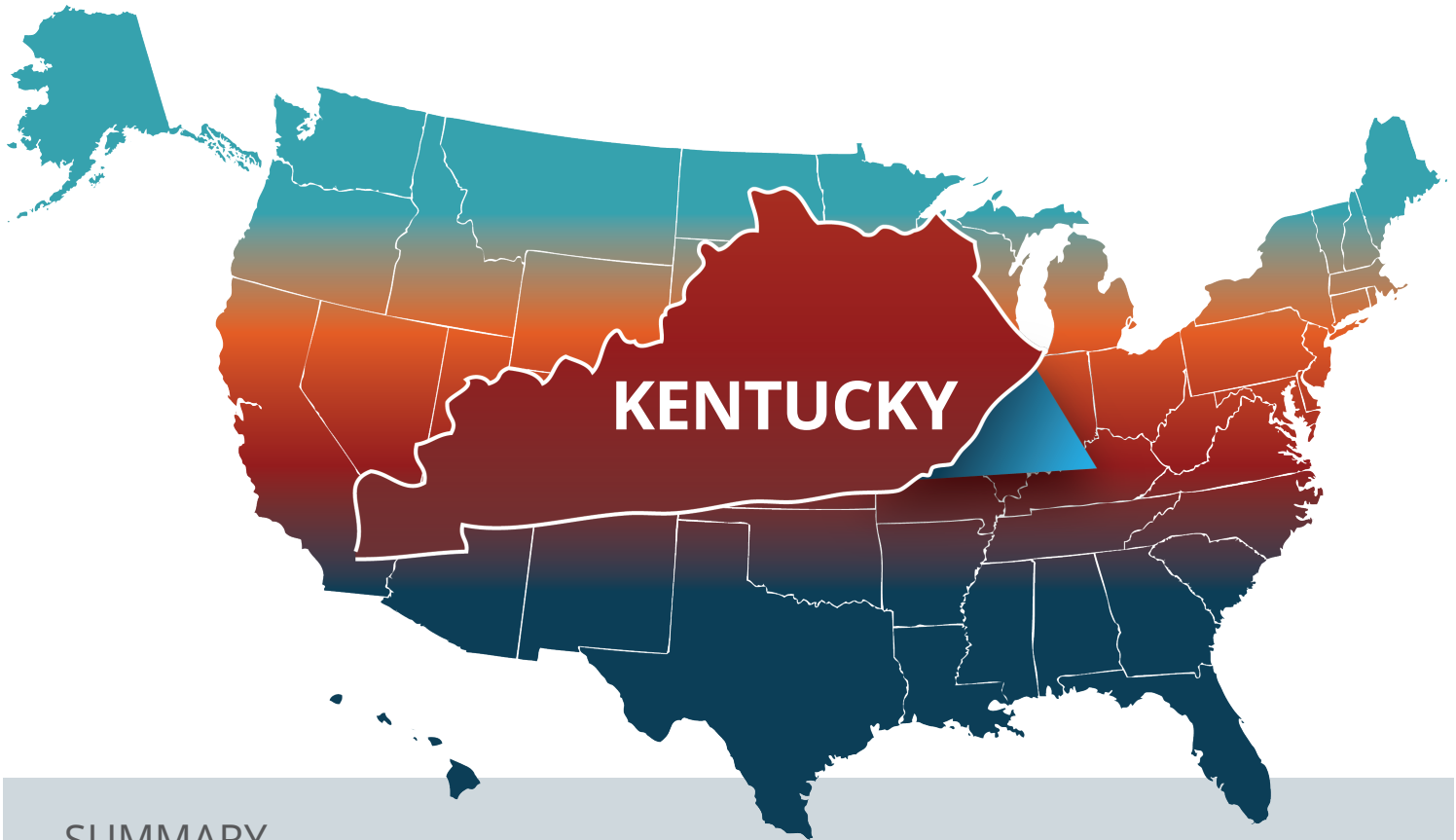


ImageTrend Collaborate™ Short Report: 2018 – 2020 Kentucky Trends in Firearm-Related Incidents in the Prehospital Setting

Volume 1; Issue 1 | Published October 2021



SUMMARY

What is already known about this topic?

Firearm-related incidents are among the five leading causes of death for individuals under age 65.¹

What does this report add?

Rate of firearm-related prehospital incidents over the last three years amongst age groups in Kentucky and across the U.S.

What is the call to action?

Identify the population most at risk for firearm-related incidents to focus resources and prevention efforts.



Overview

The Centers for Disease Control (CDC) has identified firearm-related incidents as the top five leading causes of death for individuals under the age of 65.¹ While, intentionality of firearm-related incidents is not always known in the prehospital setting, U.S. trauma centers have seen an increase in patients with violent injuries, including firearm-related, over the past 12 months.² Firearm-related incidents are a public health concern and can utilize valuable and often strained Emergency Medical Services (EMS).

Methodology

DATA COLLECTION METHOD:

All data is collected and stored within ImageTrend Collaborate. Each organization has given permission to utilize their data for Collaborate research purposes. Data reported within this report is based on the National Emergency Medical Services Information System (NEMSIS) data elements.

DATA DE-IDENTIFICATION:

ImageTrend Collaborate follows federally established HIPAA Safe Harbor Regulations to ensure data anonymity and protection of patient records. Reports provided to individual State collaborators utilizing their comparative data are only disseminated to that State's established point of contact provided to ImageTrend. Further dissemination is at the discretion of the State.

DATA ANALYSIS:

- Data was aggregated and analyzed within Microsoft PowerBI Version 2.88.1385.0.
- The incidents included in the analysis had an (eDisposition.12) Incident/Patient Disposition and (eResponse.05) was 911 Response which resulted in patient contact.
- Incidents were from 2018 to 2020.
- NEMSIS Version 3.4 Cause of Injury (eInjury.01), Provider Primary Impression (eSituation.11), and Provider Secondary Impression (eSituation.12) fields were searched for terms "gun" or "firearm."
- U.S. regions were identified utilizing the U.S. Census region groups.³
- Chi-square analysis was performed to measure differences from 2018 to 2020.

Assumptions and Limitations

Data included within this report is retrospective and includes all submissions to ImageTrend Collaborate between 1/1/2018 and 12/31/2020. If corrections/edits or changes to the ePCR documentation were made after the date the report was created, the changes are not shown in this report, but will be updated within Collaborate for future reporting.

Financial support for this report was provided by ImageTrend, Inc.

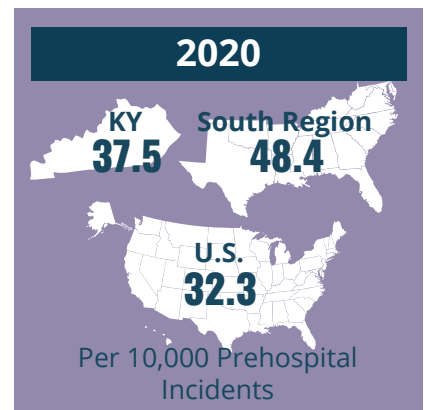
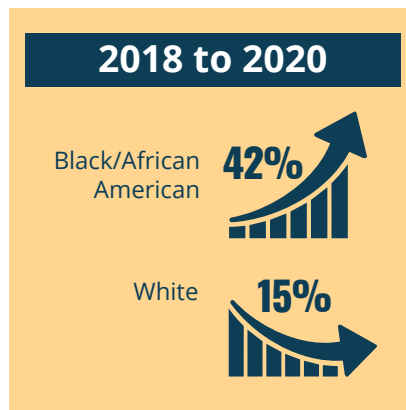
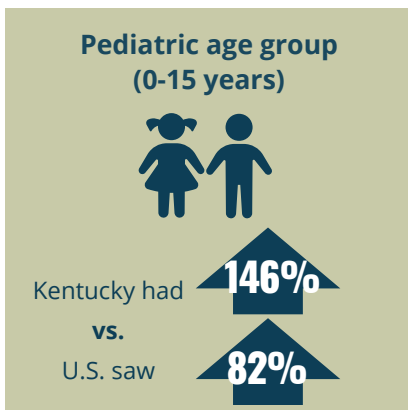
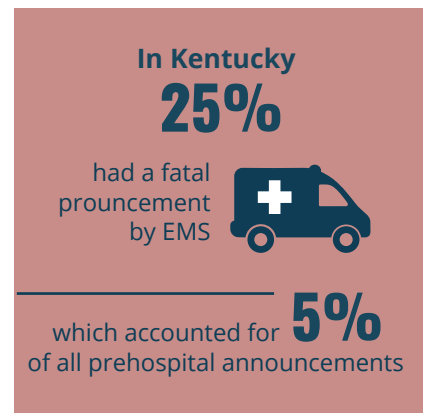
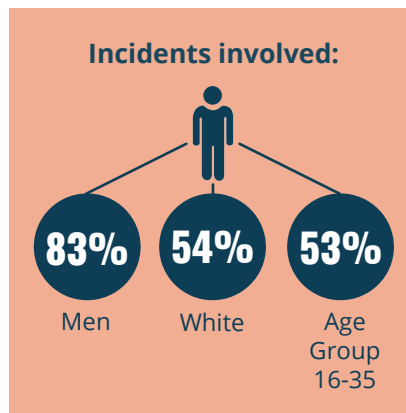
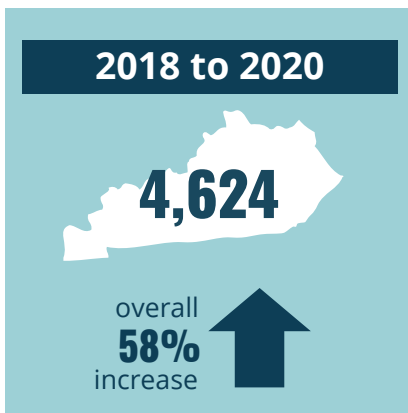


Kentucky Results

In Kentucky, from 2018 and 2020, of the 1,593,076 incidents with a 911 response and patient contact, 4,624 were firearm-related.

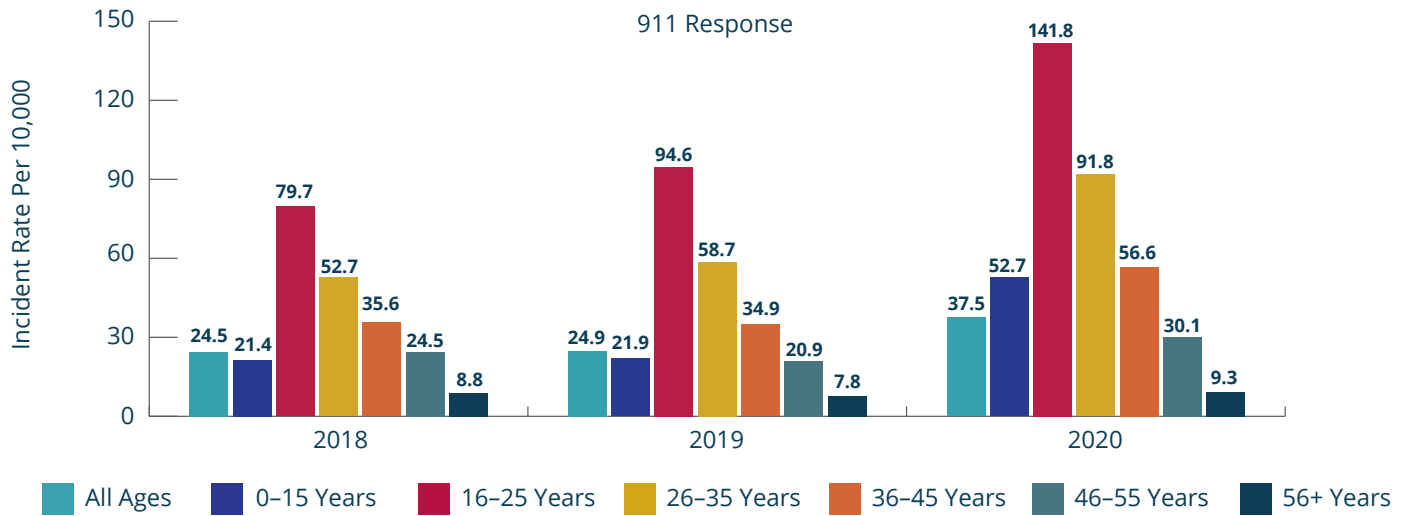
- In Kentucky, most of the firearm-related incidents involved males (83%) were white (54%), and were within the age group of 16-35 (53%).
- At a national level, almost 20% of firearm-related incidents had a fatal pronouncement by emergency medical services, this accounted for 4% of all prehospital pronouncements. In Kentucky, 25% of firearm-incidents were fatal, accounting for 5% of all field pronouncements.
- At a national level, there was a significant increase (37%) from 2018 to 2020 across all age groups and most regions, except the West. In Kentucky, there was also a significant increase (58%) in firearm-related incidents (chi-square p-value < 0.01).
- In Kentucky, the pediatrics (0-15 years) saw the largest increase (146%) in firearm-related incidents. This was considerably higher of an increase compared the U.S.(82%), but was also slightly less than the Southern region overall (66%).

Prehospital Firearm-Related Incidents





Kentucky Prehospital Firearm-Related Incidents by Age Groups and Year



Key Finding & Action Items

Kentucky firearm-related incidents increased over the last **3 years**

Evaluate firearm prevention policies across highest risk groups and regions

Further research needed intentionality:



Further Questions to Consider

- Do regions with high firearm incidents increase firearm injury risk to providers?
- Where is there a need for increased public health awareness and prevention methods?
- If intentionality is self-harm-related, what at-risk groups are in need of easier access to mental health resources?
- What prehospital interventions influence patient outcomes?
- Which destination types or designations influence patient outcomes in rural vs. urban environments?

**Table 1. Prehospital Firearm-Related Descriptives in Kentucky**

	2018		2019		2020		Total	
	Kentucky	All	Kentucky	All	Kentucky	All	Kentucky	All
All Incidents ^a	519,175	3,830,897	539,033	4,604,480	534,868	5,225,750	1,593,076	13,661,127
Firearm Incidents	1,276 (23.7%)	9,030 (0.2%)	1,343 (24.9%)	11,390 (0.3%)	2,005* (37.5%)	16,860* (0.3%)	4,624 (29.0%)	37,280 (0.3%)
Fatal Firearm Disposition	382 (29.9%)	1,730 (19.2%)	329 (24.5%)	2,242 (19.7%)	454* (22.6%)	3,069 (18.2%)	1,165 (25.2%)	6,822 (18.9%)
Female	202 (16.5%)	1,289 (14.3%)	214 (16.6%)	1,722 (15.2%)	366 (18.5%)	2,642 (15.7%)	782 (17.4%)	5,653 (15.2%)
Male	1,025 (83.5%)	7,704 (85.7%)	1,074 (83.4%)	9,628 (84.8%)	1,616 (81.5%)	14,188 (84.3%)	3,715 (82.6%)	31,520 (84.8%)
Black/African American ^b	381 (29.9%)	3,930 (43.5%)	517 (38.4%)	5,178 (45.5%)	856* (42.6%)	8,121* (48.2%)	1,754 (37.9%)	17,229 (46.2%)
White ^b	765 (60%)	2,583 (28.6%)	709 (52.7%)	3,245 (28.5%)	1,029* (51.2%)	4,701 (27.9%)	2,503 (54.1%)	10,529 (28.2%)
Hispanic ^b	28 (2.2%)	1,287 (14.3%)	28 (2.1%)	1,242 (10.9%)	41 (2.0%)	1,880* (11.2%)	97 (2.1%)	4,409 (11.8%)

^a Incidents were 911 Response where patient contact was made
^b Top 3 races by counts
*Significant difference from 2018 to 2020 (Chi-square P-value < 0.01)

Table 2. Prehospital Firearm-Related Incident by Age and Regions in Kentucky (KY)

	2018		2019		2020		Total		KY % Change 2018 vs. 2020	All % Change 2018 vs. 2020
	KY	All	KY	All	KY	All	KY	All		
Rates per 10,000 Incidents by Age Groups (% of Firearm-Related Incidents)										
0-15 years	21.4 (3.9%)	20.5 (4.6%)	21.9 (3.9%)	22.7 (4.7%)	52.7 (5.2%)	37.3* (4.8%)	30.9 (4.4%)	26.9 (4.7%)	+146.3%	+82.0%
16-25 years	79.7 (27.4%)	76.2 (30.6%)	94.6 (31.3%)	84.3 (30.9%)	141.8 (30.1%)	117.0* (31.3%)	105.1 (29.7%)	93.9 (31.0%)	+77.9%	+53.5%
26-35 years	52.7 (21.5%)	57.8 (26.2%)	58.7 (22.8%)	60.2 (25.3%)	91.8* (25.0%)	81.1* (27.0%)	68.2 (23.4%)	67.6 (26.3%)	+74.2%	+40.3%
36-45 years	35.6 (14.9%)	34.9 (14.6%)	34.9 (14.1%)	39.2 (15.4%)	56.6 (16.0%)	53.1* (16.5%)	42.7 (15.2%)	43.4 (15.7%)	+59.0%	+52.2%
46-55 years	24.5 (13.1%)	20.0 (10.4%)	20.9 (10.7%)	21.2 (10.0%)	30.1* (10.0%)	26.2* (9.2%)	25.1 (11.0%)	22.7 (9.7%)	+22.9%	+31.0%
+55 years	8.8 (19.3%)	6.3 (13.6%)	7.8 (17.3%)	6.5 (13.7%)	9.3* (13.7%)	6.8* (11.1%)	8.6 (16.2%)	6.5 (12.5%)	+5.7%	+7.9%
All Age Groups	24.5	23.9	24.9	25.1	37.5*	32.9*	29.0	27.8	+53.1	+37.7%
Rates per 10,000 Prehospital Incidents by U.S. Regions										
Kentucky (1,593,076)	23.7		24.9		37.5*		29.0		+58.2%	
South (7,375,688)	29.2		35.1		48.4*		39.3			+65.8%
All U.S. (13,661,127)	23.5		24.7		32.3*		27.3			+37.4%

^a Incidents were 911 Response where patient contact was made
*Significant difference from 2018 to 2020 (Chi-square P-value < 0.01)



To Our Contributors

We want to thank our clients who have opted to provide their data to better the industry. Without you, our efforts to advance prehospital research to improve patient care, agency efficiencies, and industry knowledge would be limited.

Thank
you

References

1. Centers for Disease Control and Prevention. Violence Prevention: Firearm Violence Prevention. Retrieved Aug 23, 2021. <https://www.cdc.gov/violenceprevention/firearms/fastfact.html>
2. R. Fojut, How trauma centers are responding to the increase of violence in the U.S. Trauma System News. (2021) <https://www.trauma-news.com/2021/08/how-trauma-centers-are-responding-to-the-increase-of-violence-in-the-u-s/>
3. Census Regions and Divisions of the United States. Retrieved Aug 23, 2021. https://www2.census.gov/geo/pdfs/maps-data/maps/reference/us_regdiv.pdf

About Collaborate

The EMS and healthcare industry is full of underutilized data that can be used to make a lasting, positive impact on the community. The ImageTrend Collaborate initiative provides insight into clinical, operational, and public health data that will contribute to healthcare provided by organizations, specific sectors, and the industry at large. We will dive into research topics relevant to the urgent topics affecting the care provided within your community. Collaborate aggregates, de-identifies and reports on data to empower data-driven decision-making. As of 2021, Collaborate data includes over 30 million incident records representing all regions of the United States. | www.ImageTrend.com/Collaborate

Correspondence:

Morgan K. Anderson, MPH

E-mail: manderson@imagetrend.com

Douglas G. Butler, Jr.

E-mail: dbutler@imagetrend.com

Clinical & Research Services ImageTrend, Inc. 20855 Kensington Blvd., Lakeville, MN 55044

About ImageTrend

ImageTrend, Inc. is dedicated to connecting life's most important data in the healthcare and emergency response community. We deliver software solutions, data analytics and services for EMS, hospitals, community paramedicine/mobile integrated healthcare programs (CP/MIH), critical care, fire, and preparedness to enable fully integrated patient-centric healthcare and public safety. Our commitment to innovation, our clients, and providing world-class implementation and support is unsurpassed. Based in Lakeville, Minnesota, we combine business analysis, creative design, and data-driven architecture to offer scalable solutions and strategies for today and the future. | www.ImageTrend.com