

# Kentucky Board of Emergency Medical Services

## 2016 Opioid Crisis



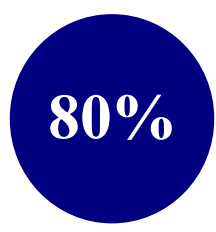
**\*8,569**

**Naloxone Administrations**  
by EMS



**92%**  
of KY Counties had at  
least **1** Incident

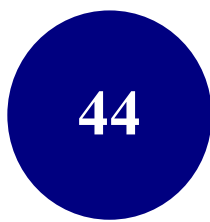
### NALOXONE PATIENTS =



**White / Caucasian**



**Gender**



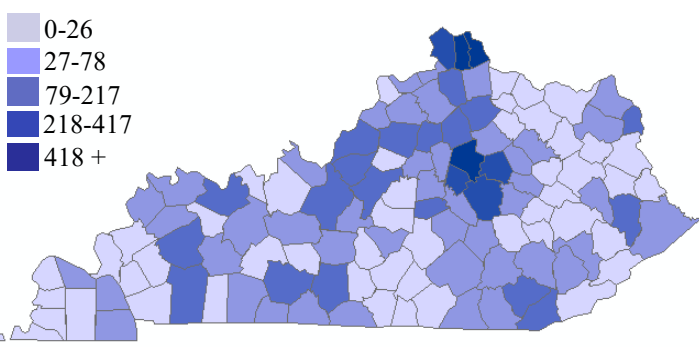
**Years-Old**



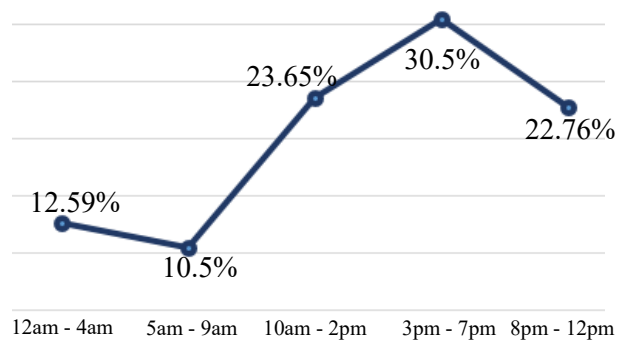
**Milligrams**

**Naloxone Dosage**

### Naloxone Administration by County

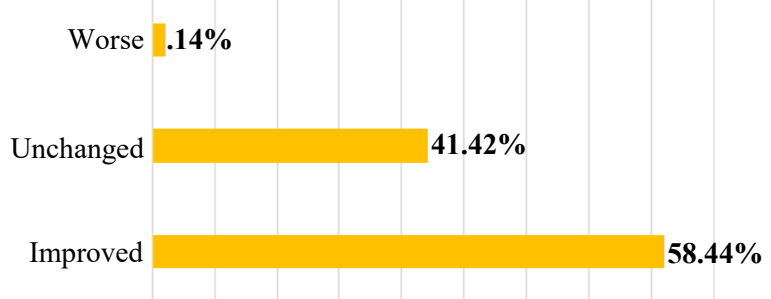


### Naloxone Call Times By Hour Range



Top 10 Counties	2016 Naloxone Administration Count
Kenton	858
Fayette	699
Campbell	598
Madison	417
Boone	412
Clark	360
Jessamine	305
Bullitt	217
Jefferson	176
Boyd	164

### Patient Condition after Receiving Naloxone



\*The figures appearing in this publication are approximations based on data collected within KSTARS for CY2016. During the NEMSIS V2 to V3 transition several agencies/incidents went unreported.