

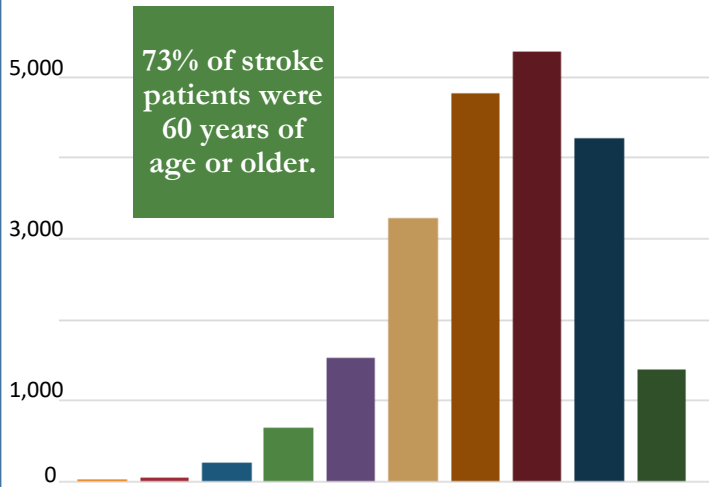
Kentucky Board of Emergency Medical Services

2017 EMS Stroke Incidents



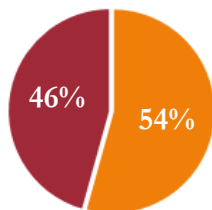
Patient Demographics

73% of stroke patients were 60 years of age or older.



| Patient Age Range | | |
|-------------------|-------|--------|
| Age | Count | % |
| Birth - 9 | 23 | .11% |
| 10 - 19 | 62 | .29% |
| 20 - 29 | 243 | 1.13% |
| 30 - 39 | 660 | 3.07% |
| 40 - 49 | 1,527 | 7.09% |
| 50 - 59 | 3,250 | 15.1% |
| 60 - 69 | 4,800 | 22.3% |
| 70 - 79 | 5,324 | 24.74% |
| 80 - 89 | 4,247 | 19.73% |
| 90 + | 1,387 | 6.44% |

| Patient Gender | |
|----------------|--------|
| Female | 11,696 |
| Male | 9,842 |



Patients with incident complaint reported by dispatch of “Stroke/CVA”, chief complaint of “stroke”, or provider primary impression of “stroke” account for 22,049 incidents.

Incident Complaint Reported by Dispatch

| | |
|------------|--------|
| Stroke/CVA | 15,096 |
|------------|--------|

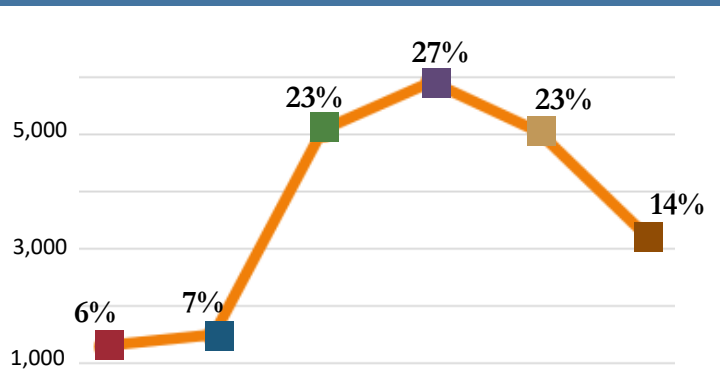
Chief Complaint

| | |
|------------|-------|
| Stroke/CVA | 1,979 |
|------------|-------|

Provider Primary Impression

| | |
|------------|-------|
| Stroke/CVA | 7,603 |
|------------|-------|

Incident Peak Times



Incident Hour Range

| | |
|-----------------|-------|
| 12 am - 3:59 am | 1,305 |
| 4 am - 7:59 am | 1,496 |
| 8 am - 11:59 am | 5,075 |
| 12 pm - 3:59 pm | 5,939 |
| 4 pm - 7:59 pm | 5,040 |
| 8 pm - 11:59 pm | 3,194 |

Kentucky Board of Emergency Medical Services

2017 EMS Stroke Incidents



Glasgow Coma Score

Eye Score

| | |
|--------------------------------------|--------|
| 1 - No eye movement when assessed | 3,215 |
| 2 - Opens eyes to verbal stimulation | 1,096 |
| 3 - Opens eyes to verbal stimulation | 3,633 |
| 4 - Opens eyes spontaneously | 42,125 |

Interpreting Total Glasgow Coma Score

| | |
|----------|---------------|
| Severe | GCS 8 or Less |
| Moderate | GCS 9 - 12 |
| Mild | GCS 13 - 15 |

The Glasgow Coma Score (GCS) is a reliable and objective way of recording the initial and subsequent level of consciousness in a person after a brain injury. The GCS measures the following functions: eye, motor, and verbal skills.

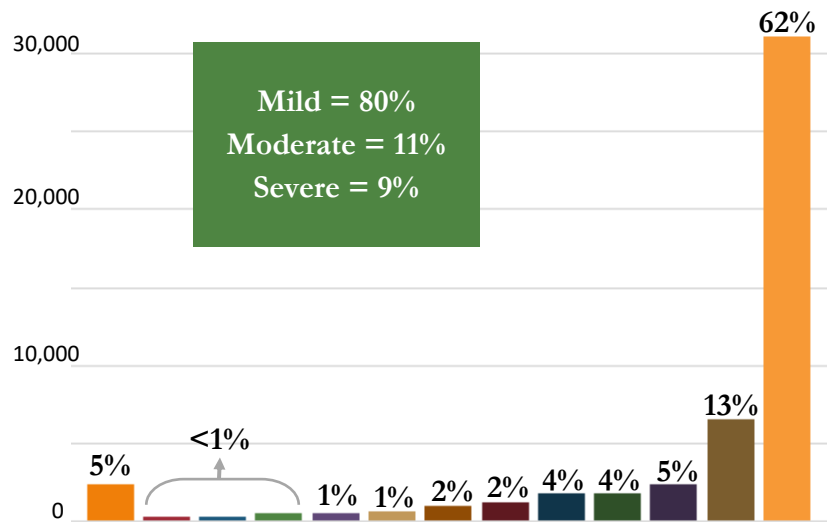
Motor Score

| | |
|--|--------|
| 1 - No Motor Response | 2,913 |
| 2 - Extension to pain | 200 |
| 3 - Flexion to pain | 431 |
| 4 - Withdrawal from pain | 2,504 |
| 5 - Localizing pain | 3,123 |
| 6 - Obeys command; appropriate response to stimulation | 41,086 |

Verbal Score

| | |
|--|--------|
| 1 - No verbal/vocal response | 5,660 |
| 2 - Incomprehensible sounds; inconsolable, agitated | 2,302 |
| 3 - Inappropriate words; inconsistently consolable, moaning | 1,813 |
| 4 - Confused; cries but is consolable, inappropriate interactions | 8,335 |
| 5 - Oriented; smiles, oriented to sounds, follows objects, interacts | 32,141 |

Total Glasgow Coma Score Count



| GCS | Count | GCS | Count |
|-----|-------|-----|--------|
| 3 | 2,406 | 8 | 643 |
| 4 | 222 | 9 | 916 |
| 5 | 268 | 10 | 1,187 |
| 6 | 471 | 11 | 1,797 |
| 7 | 479 | 12 | 1,804 |
| | | 13 | 2,330 |
| | | 14 | 6,535 |
| | | 15 | 31,147 |

Kentucky Board of Emergency Medical Services

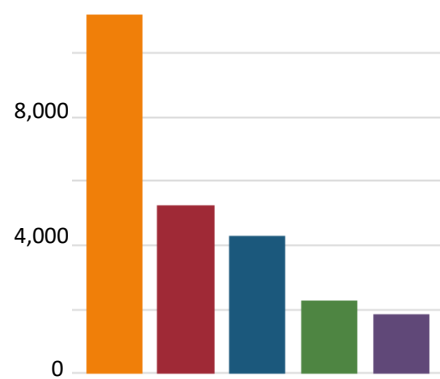
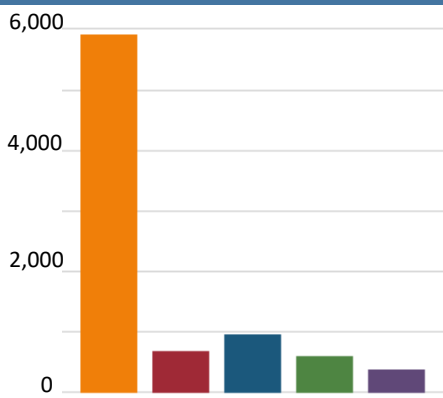
2017 EMS Stroke Incidents



Top 12 Facility Destinations

| | | | |
|---------------------------------------|-----|---------------------------------|-----|
| University of Louisville Hospital | 943 | Baptist Health Louisville | 413 |
| Owensboro Health Regional Hospital ER | 797 | Med Center Emergency Department | 379 |
| University of Kentucky Medical Center | 629 | Baptist Health Lexington | 373 |
| Norton Brownsboro Hospital | 563 | Floyd Memorial Hospital | 332 |
| Lake Cumberland Regional Hospital | 509 | Hardin Memorial Hospital | 322 |
| Central Baptist Hospital | 423 | St. Elizabeth Edgewood | 309 |

Medications Administered & Procedures Performed



| Top 5 Medications | |
|-------------------|-------|
| Oxygen | 5,909 |
| Ondansetron | 697 |
| Sodium Chloride | 969 |
| Fentanyl | 605 |
| Midazolam | 377 |

| Top 5 Procedures | |
|---------------------------------|--------|
| Extremity Vein Catheterization | 11,183 |
| 12 Lead ECG Obtained | 5,266 |
| 3 Lead ECG Obtained | 4,302 |
| Evaluation Procedure | 2,256 |
| Moving a Patient to a Stretcher | 1,848 |

3,786
Positive Vitals Stroke Scale
Score Incidents

338
Blunt Mechanism of Injury
Incidents

52 Minutes
Average Unit Notified by
Dispatch to Patient Arrived at
Destination

Patient Acuity

| | |
|--------------|-------|
| Critical | 292 |
| Emergent | 1,607 |
| Improved | 3,131 |
| Lower Acuity | 1,136 |